

smsng-c32 VESA adapter

Assembly instructions

The VESA adapter is compatible with the following monitors from Samsung (samsung.com):

C24H711, C27H711, C32H711

With the VESA adapter, you can easily attach your SAMSUNG monitor to a monitor arm with a VESA hole pattern (**75 x 75mm**). Use the supplied screws and nuts for this.

Direct wall mounting is NOT possible as the VESA adapter already contains metric threads through which no screws can be inserted for mounting to the wall.



Important Safeguards



Please read these instructions carefully and keep them for future reference. If you pass the product on to third parties, these instructions should always be included. Failure to follow these instructions may result in injury or damage to persons or the product, for which we cannot accept any liability.

IMPORTANT - KEEP FOR FUTURE REFERENCE.

- This product should always be used in accordance with the specified safety instructions.
- Do not install your VESA adapter in combination with the monitor in places where there are people below.
- Do not exceed the maximum weight of the compatible monitor models as this may result in serious injury or damage to property.
- Observe the maximum ambient temperature of 35°C when using the product.
- Do not mount the VESA adapter near a heat source or in direct sunlight, as this could heat up the adapter.
- Check whether your mounting point (e.g. monitor arm) can withstand the weight of the monitor with VESA adapter.
- The product is designed exclusively for mounting with a hole pattern of 75x75 mm.
- After installing the VESA adapter, the position of the monitor must be readjusted to ensure correct ergonomics.

CAUTION

Ensure that the device is switched off and disconnected from the power supply before installation to avoid possible injury or damage.

1. Before First Use

Check the product carefully for possible transport damage and for the absence of accessories, such as screws, which should be included in the scope of delivery.

CAUTION

Make sure that packaging materials and small screws and parts contained therein are inaccessible to children to minimize the risk of choking and other risks.

2. Maintenance and Cleaning

2.1 Maintenance

- It is recommended to check every three months that all screws are still tight. Also, regularly check the condition of all components of the product.
- Store the product in a cool and safe place, ideally at a maximum storage temperature of 40°C. For additional safety, keep the product away from children and preferably in its original packaging.
- Avoid any vibrations and shocks so as not to affect the life and functionality of the product.

2.2 Cleaning

- No corrosive or hot cleaning agents should be used to clean the product. Likewise, wire brushes, metal or other sharp materials are unsuitable for cleaning and should not be used.
- For gentle and effective cleaning, the use of a soft, damp cloth is recommended.

3. Waste Disposal

For the disposal of this product we recommend to contact the responsible local authorities or disposal services. They can provide you with detailed information on available disposal options and recycling centers in your area.

4. Manufacturer Information

3idee S.à r.l.
19 Rue de Bitbourg
L-1273 Luxembourg
Luxembourg

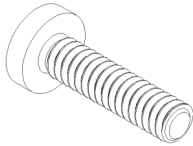
mail: info@3idee.eu

5. Help and Feedback

If you need help with your article, we are here for you. We also appreciate any feedback.

<https://help.3idee.eu/en/contact>

Scope of Delivery Accessories



4x M4x16 Screw with cross
recess (**SP12**)

Horizontal / Vertical Alignment

Please note: Not all VESA adapters and monitors are designed for vertical (upright) orientation. This limitation is often due to the specific geometry of the adapter or monitor. Do not ignore this information, as the load limit of the adapter can quickly be exceeded if not installed properly.

We are continuously working on developing monitors and adapters that are also suitable for vertical orientation.

However, monitors are designed for horizontal alignment by default.

**Horizontal
Mounting: YES**



**Vertical
Mounting: YES**



Assembly Instruction

Step 1

Remove the base of your Samsung Curved Monitor if it is already attached.

To do this, use a screwdriver or pen to **press** the button labeled "**Service**". (Figure 1)

The stand is now unlocked. Now turn the foot to the right to release it.

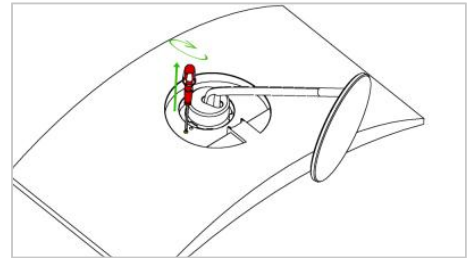


Figure 1

Step 2

Now pull the stand upwards. (Figure 2)

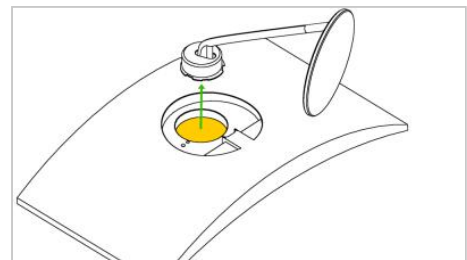


Figure 2

Step 3

Now take the VESA adapter and align it as shown using the lines on the VESA adapter and the dot on the monitor. (Figure 3)

Make sure that the "up" mark is aligned with the top edge of the monitor.

This is necessary to be able to screw the adapter into the mount correctly.

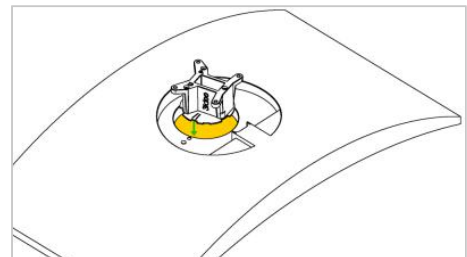


Figure 3

Step 4

Now turn the VESA adapter to the right until **you hear** it click into place. (Figure 4)

The VESA adapter should now no longer be able to come loose!

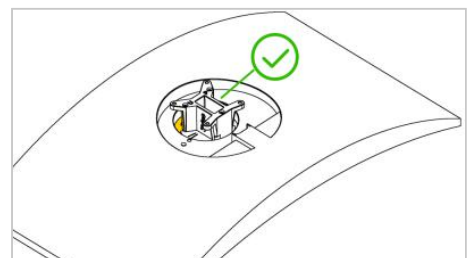


Figure 4

Step 5

Align the VESA adapter with the "Up" mark to the top edge of the screen and place the adapter in the mount of your Samsung monitor.

Now screw the 3idee VESA adapter to your Samsung monitor as shown using the 4 M4 screws supplied (**screw bag: SP12**).

Make sure that the two long screws are screwed into the bottom holes and the two short screws are screwed into the top two holes.

(Figure 5)

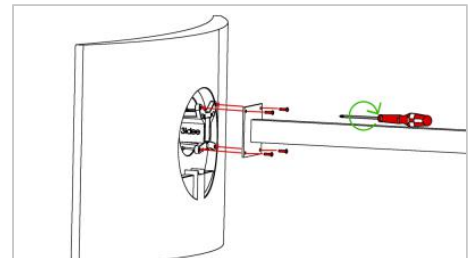


Figure 5

Step 6

Please check that all 4 screws are properly tightened. (Figure 6)

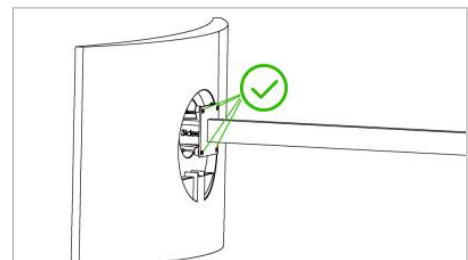


Figure 6